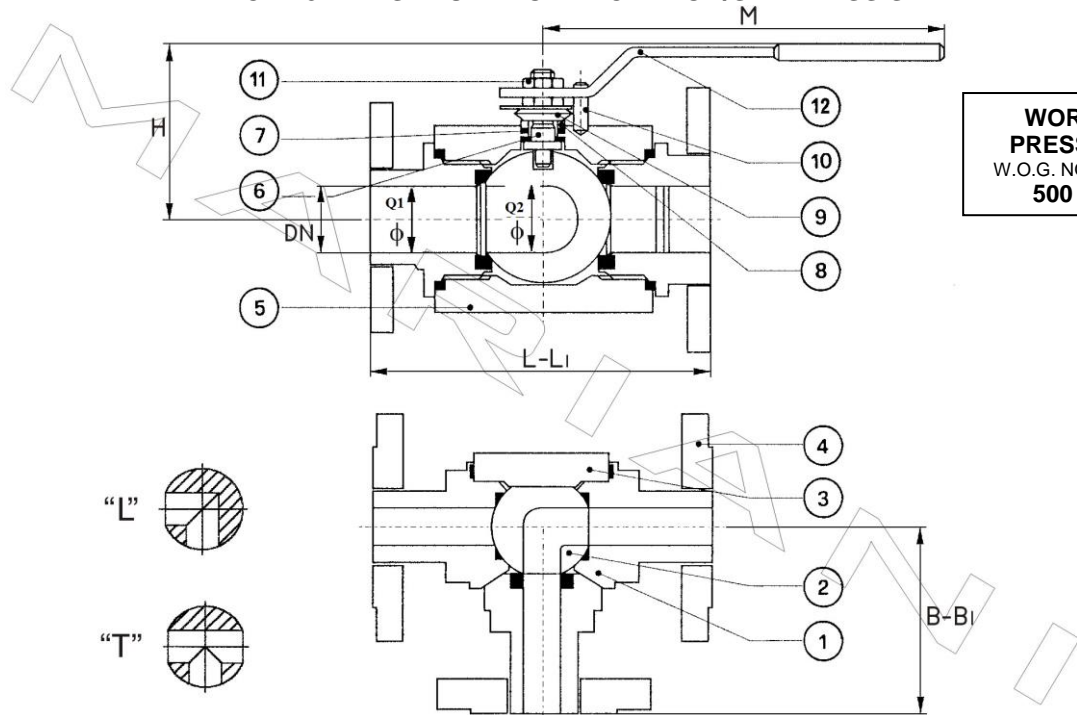


VALVOLA A SFERA - MONOBLOCCO - 3 VIE - PASSAGGIO TOTALE -  
ACCIAIO C./INOX - UNI/ANSI  
BALL VALVE - 1 PIECE - 3 WAYS - FULL BORE - CARBON/STAINLESS ST. -



## UNI/ANSI

### OPTIONAL FEATURES:

- 1) LOCKING DEVICE
- 2) MOUNTING PLATE DIN/ISO 5211
- 3) GEAR MANUAL OPERATOR
- 4) PNEUMATIC/ELECTRIC ACTUATOR
- 5) LIMIT SWITCHES

|    | DESCRIZIONE      | DESCRIPTION    | A (Carbon Steel)  | INOX (Stainless Steel) |
|----|------------------|----------------|-------------------|------------------------|
| 1  | MANICOTTO        | END PLUG       | ASTM A105         | ASTM A182 F316         |
| 2  | SFERA            | BALL           | ASTM A182 F316L   | ASTM A182 F316         |
| 3  | LATERALE         | BODY CONNECTOR | ASTM A105         | ASTM A182 F316         |
| 4  | FLANGIA          | FLANGE         | ASTM A105         | ASTM A182 F316         |
| 5  | CORPO            | BODY           | ASTM A105         | ASTM A182 F316         |
| 6  | ASTA             | STEM           | ASTM A182 F316L   | ASTM A182 F316         |
| 7  | GUARNIZIONE      | GASKET         | GRAPHITE TEFLONED | GRAPHITE TEFLONED      |
| 8  | PREMISTOPPA      | THRUST WASHER  | ASTM A105         | ASTM A105              |
| 9  | MOLLE A TAZZA    | SPRING DISCS   | ASTM A182 F316L   | ASTM A182 F316L        |
| 10 | FERMO            | STOP           | ASTM A105         | ASTM A105              |
| 11 | DADO -CONTRODADO | NUTS           | ASTM A194 2H      | ASTM A194 2H           |
| 12 | LEVA             | LEVER          | CARBON STEEL      | CARBON STEEL           |

**FLANGED ENDS: DIN 2501 PN 10-16-25 / ANSI-ASME 150-300 RF**

| DN             | 1/2" | 3/4" | 1"  | 1 1/4" | 1 1/2" | 2"  |
|----------------|------|------|-----|--------|--------|-----|
| <              | 15   | 20   | 25  | 30     | 38     | 48  |
| L (PN 10-40)   | 149  | 163  | 173 | 202    | 212    | 231 |
| L1(150-300 RF) | 141  | 154  | 166 | 179    | 191    | 220 |
| B (PN 10-40)   | 77   | 82   | 87  | 101    | 106    | 116 |
| B1(150-300 RF) | 69   | 77   | 83  | 90     | 96     | 110 |
| M              | 148  | 180  | 180 | 240    | 240    | 280 |
| H              | 65   | 80   | 90  | 100    | 110    | 120 |
| Kg             | 3.5  | 5    | 7.5 | 11     | 13     | 20  |