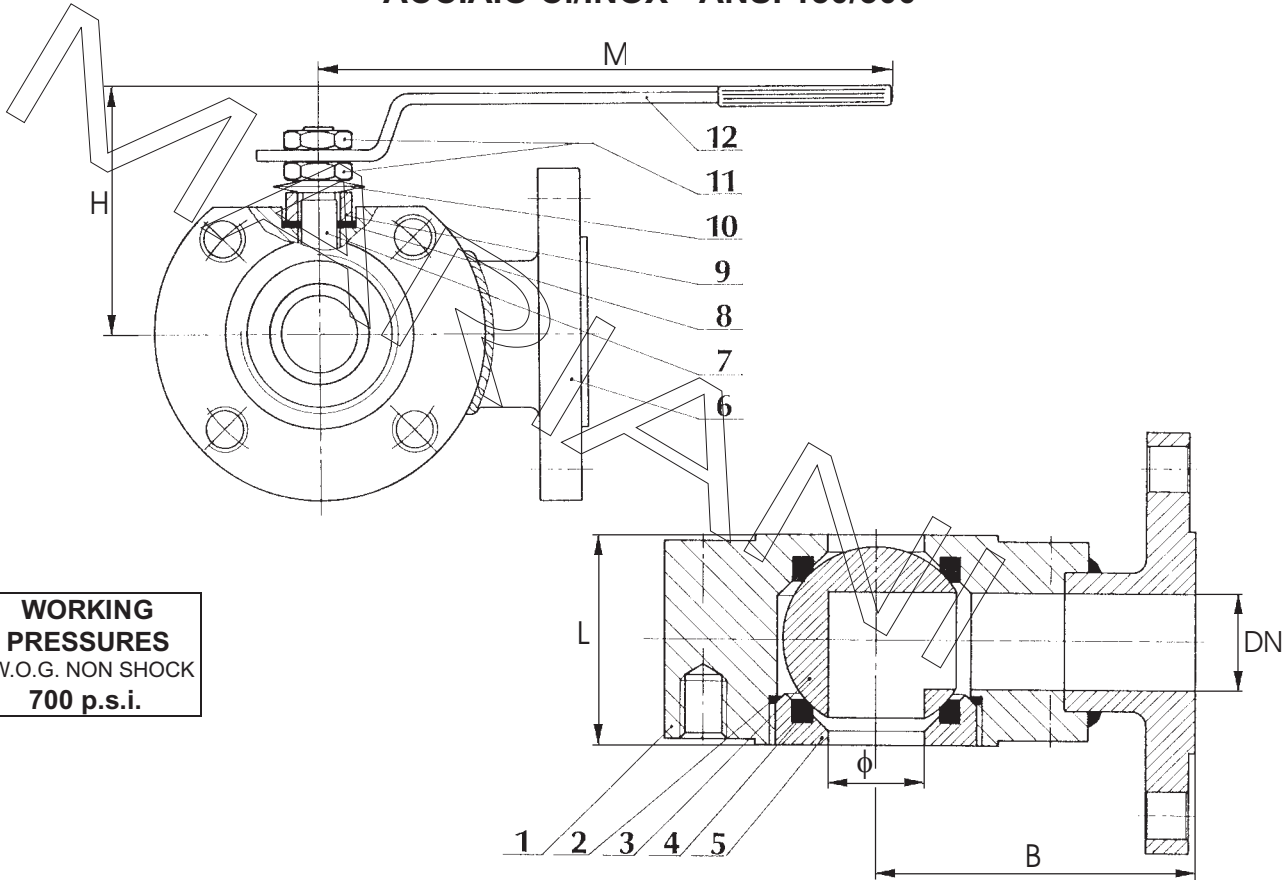


**BALL VALVE - 3 WAYS - WAFER TYPE - REDUCED BORE - L -  
CARBON/STAINLESS ST. - ANSI 150/300**

**VALVOLA A SFERA - 3 VIE - TIPO WAFER - PASSAGGIO RIDOTTO - L -  
ACCIAIO C./INOX - ANSI 150/300**



**WORKING PRESSURES**  
W.O.G. NON SHOCK  
**700 p.s.i.**

- OPTIONAL FEATURES:** 1)LOCKING DEVICE  
2)EXTENDED WRENCH  
3)MOUNTING PLATE DIN/ISO 5211  
4)GEAR MANUAL OPERATOR  
5)PNEUMATIC/ELECTRIC ACTUATOR  
6)LIMIT SWITCHES

CONFORM TO: API STD 6D / BS 5351

	DESCRIZIONE	DESCRIPTION	A (Carbon Steel)	INOX (Stainless Steel)
1	CORPO	BODY	ASTM A105	ASTM A182 F316
2	GUARNIZIONE	OR	VITON	VITON
3	SFERA	BALL	ASTM A182 F304	ASTM A182 F316
4	SEGGIO	SEAT	P.T.F.E.	P.T.F.E.
5	MANICOTTO	END PLUG	ASTM A105	ASTM A182 F316
6	FLANGIA LATERALE	END FLANGE	ASTM A105	ASTM A182 F316
7	ASTA	STEM	ASTM A182 F304	ASTM A182 F316
8	SEDE ASTA	STEM SEAT	GRAPHITE TEFLONED	GRAPHITE TEFLONED
9	PREMISTOPPA	THRUST WASHER	ASTM A105	ASTM A182 F316
10	MOLLE A TAZZA	SPRING DISCS	ASTM A182 F304	ASTM A182 F304
11	DADO - CONTRODADO	NUTS	ASTM A194 2H	ASTM A194 2H
12	LEVA	LEVER	CARBON STEEL	CARBON STEEL

**FLANGED ENDS: DIN 2501 PN 10-16-25 / ANSI-ASME 150-300 RF**

DN	1/2"	3/4"	1"	1 1/4"	1 1/2"	2"	2 1/2"	3"	4"
φ	10	14	20	25	32	38	48	70	84
L	32	42	45	54	61	72	98	118	140
M	150	150	185	285	285	285	380	380	475
H	80	87	91	106	113	120	157	168	184
B	85	90	90	105	120	130	150	175	185
Kg	4.5	7	8.5	11	13.5	17	22	27	40