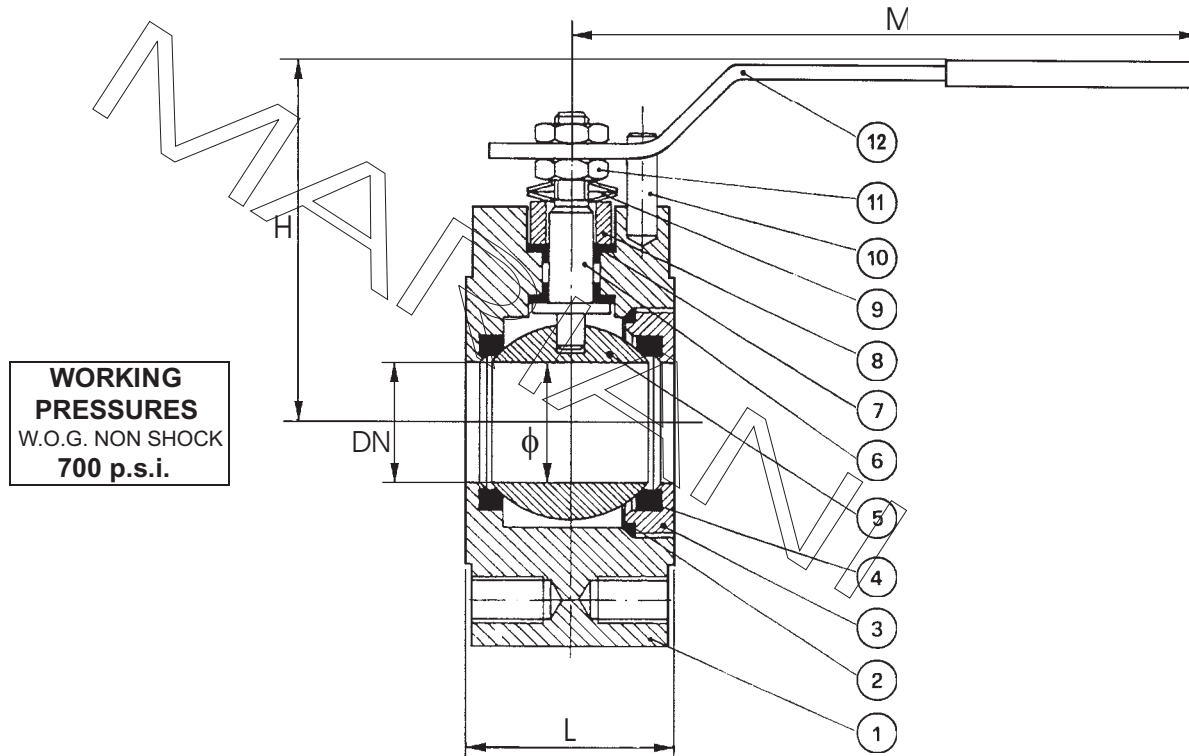


**VALVOLA A SFERA - TIPO WAFER - PASSAGGIO TOTALE -
ACCIAIO C./INOX - ANSI 150-300-600**

**BALL VALVE - WAFER TYPE - FULL BORE - CARBON/STAINLESS ST. -
ANSI 150-300-600**



WORKING PRESSURES
W.O.G. NON SHOCK
700 p.s.i.

CONFORM TO: API STD 6D / BS 5351
FIRE SAFE API 607 / BS 6755
ANTISTATIC DEVICE BS 5146

OPTIONAL FEATURES: 1)ANSI 600
2)LOCKING DEVICE
3)EXTENDED WRENCH
4)MOUNTING PLATE DIN/ISO 5211
5)GEAR MANUAL OPERATOR
6)PNEUMATIC/ELECTRIC ACTUATOR
7)LIMIT SWITCHES

OPTIONAL MATERIALS: 10)ASTM A350 LF2
11)MONEL K500
12)ASTM A494 CW12M1 (HASTELLOY C)
13)UNS-S 31803 (DUPLEX STAINLESS)
14)ASTM B148 C95500 (AL/BZ)
15)B/62

	DESCRIZIONE	DESCRIPTION	A (Carbon Steel)	INOX (Stainless Steel)
1	CORPO	BODY	ASTM A105	ASTM A182 F316
2	GUARNIZIONE	OR	VITON	VITON
3	MANICOTTO	END PLUG	ASTM A105	ASTM A182 F316
4	SEGGIO	SEAT	P.T.F.E.	P.T.F.E.
5	SFERA	BALL	ASTM A182 F304	ASTM A182 F316
6	ASTA	STEM	ASTM A182 F304	ASTM A182 F316
7	GUARNIZIONE	STEM SEAT	GRAPHITE TEFLONED	GRAPHITE TEFLONED
8	PREMISTOPPA	THRUST WASHER	ASTM A105	ASTM A182 F316
9	MOLLE A TAZZA	SPRING DISCS	ASTM A182 F304	ASTM A182 F304
10	FERMO	STOP	ASTM A193 B7	ASTM A193 B7
11	DADO - CONTRODADO	NUTS	ASTM A194 2H	ASTM A194 2H
12	LEVA	LEVER	CARBON STEEL	CARBON STEEL

**FLANGED ENDS: ANSI-ASME 150-300-600 RF
DIN 2501 PN 10-16-25**

SIZE	1/2"	3/4"	1"	1 1/4"	1 1/2"	2"	2 1/2"	3"	4"	5"	6"	8"
DN	15	20	25	32	40	50	65	80	100	125	150	200
φ	14	20	25	32	38	48	62	75	95	118	144	194
L	32	42	45	54	61	72	98	118	140	177	210	292
M	150	150	185	285	285	285	380	380	475	475	475	610
H	80	87	91	106	113	120	157	168	184	208	213	320
Kg	1.5	2	2.7	3.8	6.5	8	15	21.5	31	47	63.5	95