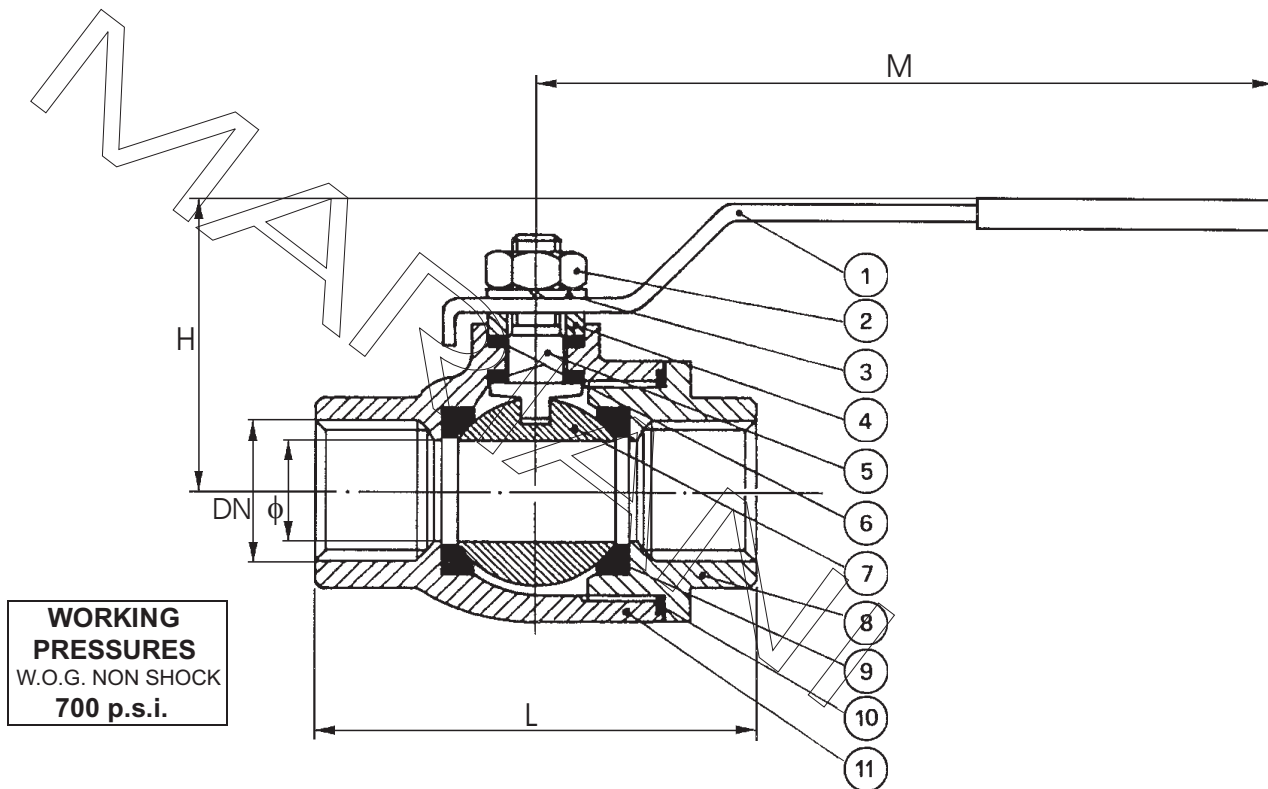


VALVOLA A SFERA - PASSAGGIO TOTALE - INOX - FF - PN 48
BALL VALVE - 1 PIECE - FULL BORE - STAINLESS STEEL - FF - 300 LBS



WORKING PRESSURES
W.O.G. NON SHOCK
700 p.s.i.

CONFORM TO: MSS SP 25
MSS SP 110

	DESCRIZIONE	DESCRIPTION	MATERIAL
1	LEVA	LEVER	ASTM A182 F304
2	DADO	NUT	ASTM A182 F304
3	PIASTRINA	PLATE	ASTM A182 F304
4	PREMISTOPPA	THRUST WASHER	ASTM A182 F304
5	ASTA	STEM	ASTM A182 F316
6	SEDE ASTA	STEM SEAT	P.T.F.E.
7	SFERA	BALL	ASTM A182 F316
8	MANICOTTO	END PLUG	ASTM A182 F316
9	SEGGIO	SEAT	P.T.F.E.
10	GUARNIZIONE	BODY SEAL	P.T.F.E.
11	CORPO	BODY	ASTM A182 F316

THREADING: GAS (ISO 7/1 Rp) FEMALE PARALLEL

DN	1/4"	3/8"	1/2"	3/4"	1"	1 1/4"	1 1/2"	2"	2 1/2"	3"	4"
φ	13	13	15	20	25	32	38	50	65	80	100
L	50	50	57	64	78	90	104	126	160	186	260
M	101	101	101	112	160	160	190	190	245	245	280
H	43	43	45	58	70	74	85	91	128	140	155
Kg	0.250	0.250	0.320	0.530	0.900	1.300	1.900	3.200	6.800	12	23