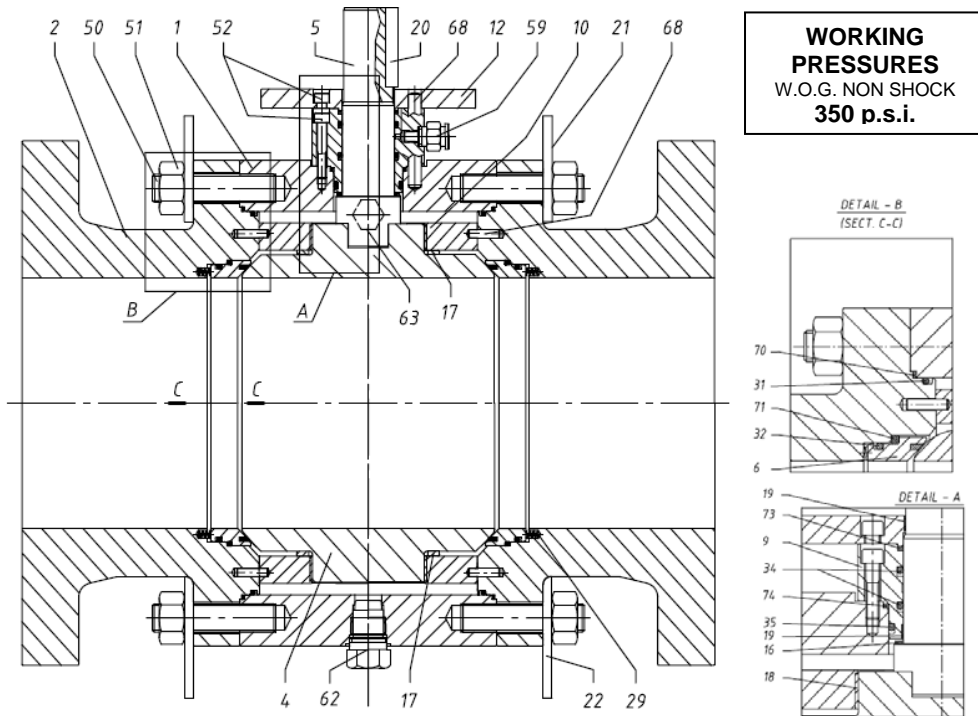


Mariani - fluid control -

479

TRUNNION BALL VALVE – FULL BORE –NI/AL BRONZE – ANSI 150



APPLICABLE STANDARD:
 - API 598
 - ASME B16.34
 - ASME B16.5
 - API 6D TRUNNION MOUNTED

STANDARD AND SPECIFICATION
 -SELF RELIEVING SEAT RINGS
 - ANTI BLOW OUT STEM
 - FIRE SAFE ACCORDING TO API 6FA, 607, ISO 10497

	DESCRIPTION	AL / BZ
1	BODY	ASTM B148 C95800
2	FLANGE	ASTM B148 C95800
4	BALL	ASTM B148 C95800
5	STEM	ASTM B150 C63000
6	SEAT/INSERT	ASTM B148 C95800/DEVLON
9	GLAND PLATE	ASTM B148 C95800
10	BEARING RETAINER	ASTM B148 C95800
12	ADAPTER PLATE	ASTM B148 C95800
16	STEM AXIAL BERING	AISI 316 + P.T.F.E.
17	BALL AXIAL BEARING	AISI 316 + P.T.F.E.
18	BALL RADIAL BEARING	AISI 316 + P.T.F.E.
19	STEM RADIAL BEARING	AISI 316 + P.T.F.E.
20	STEM KEY	39NiCrMo3
21	LIFTING LUG	Fe 430
22	SUPPORT LEGS	Fe 430
29	SEAT SPRING	INCONEL X 750
31	BODY SEAL	VITON A.E.D.
32	SEAT SEAL	VITON A.E.D.
34	STEM SEAL	VITON A.E.D.
35	GLAND PLATE SEAL	VITON A.E.D.
50	STUD	ASTM A 193 B8M
51	NUT	ASTM A 194 Gr 8M
52	CAPSCREW	A4 Gr.7
59	STEM INJECTOR	ASTM A 182 F316
62	DRAIN PLUG	ASTM A 182 F316
63	VENT BLEEDER VALVE	ASTM A 182 F316
68	PIN	39NiCrMo3
71	SEAT FIRE SAFE GASKET	GRAPHITE
73	SEAT FIRE SAFE GASKET	GRAPHITE
74	GLAND PLATE FIRE SAFE GASKET	GRAPHITE
100	STEM INJECTON SEAL	VITON A.E.D.
103	DRAIN INTERNAL SEAL	VITON A.E.D.
103A	DRAIN EXTERNAL SEAL	VITON A.E.D.
104	VENT INTERNAL SEAL	VITON A.E.D.
104A	VENT EXTERNAL SEAL	VITON A.E.D.