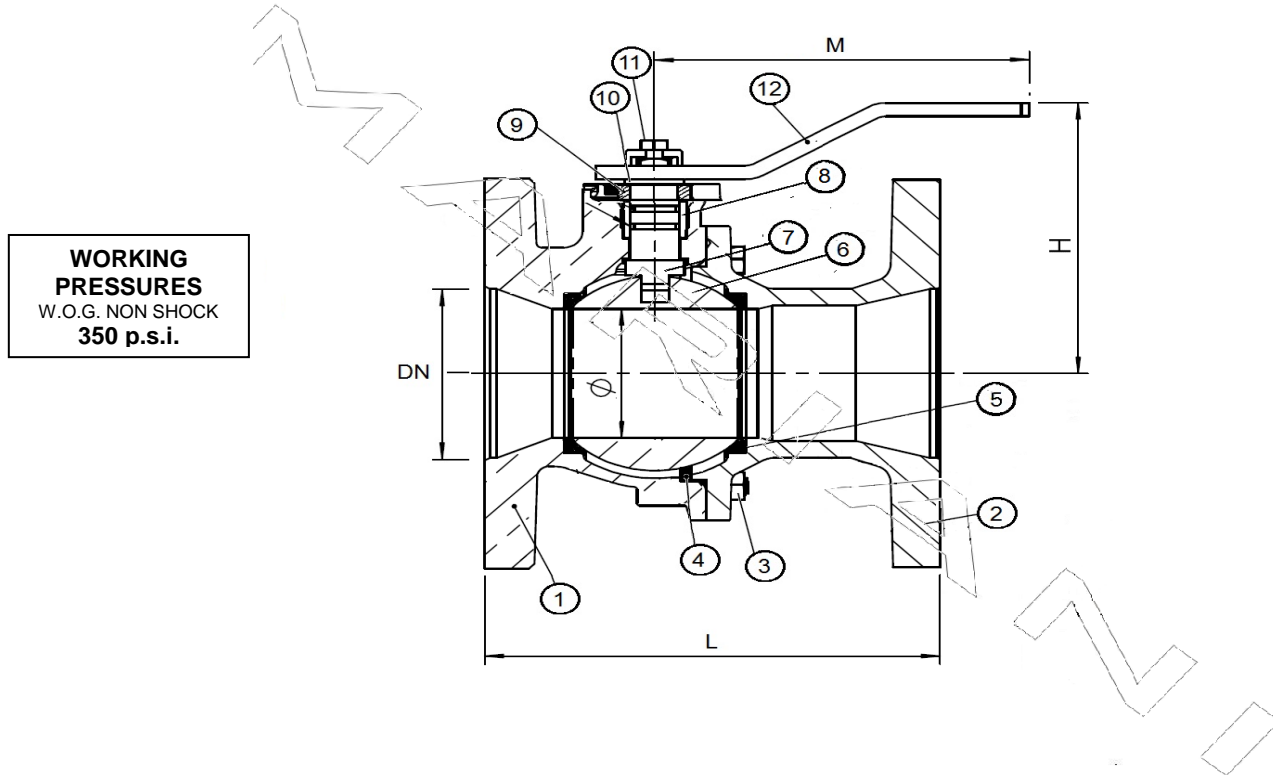


VALVOLA A SFERA - SPLIT BODY - PASSAGGIO RIDOTTO - NI/AL BRONZE - ANSI 150

BALL VALVE - SPLIT BODY - REDUCED BORE - NI/AL BRONZE - ANSI 150



CONFORM TO: API STD 6FA / ISO 17292
 FIRE SAFE DESIGN API 607 / BS 6755
 LENGTH ANSI B16.10
 MSS SP-72

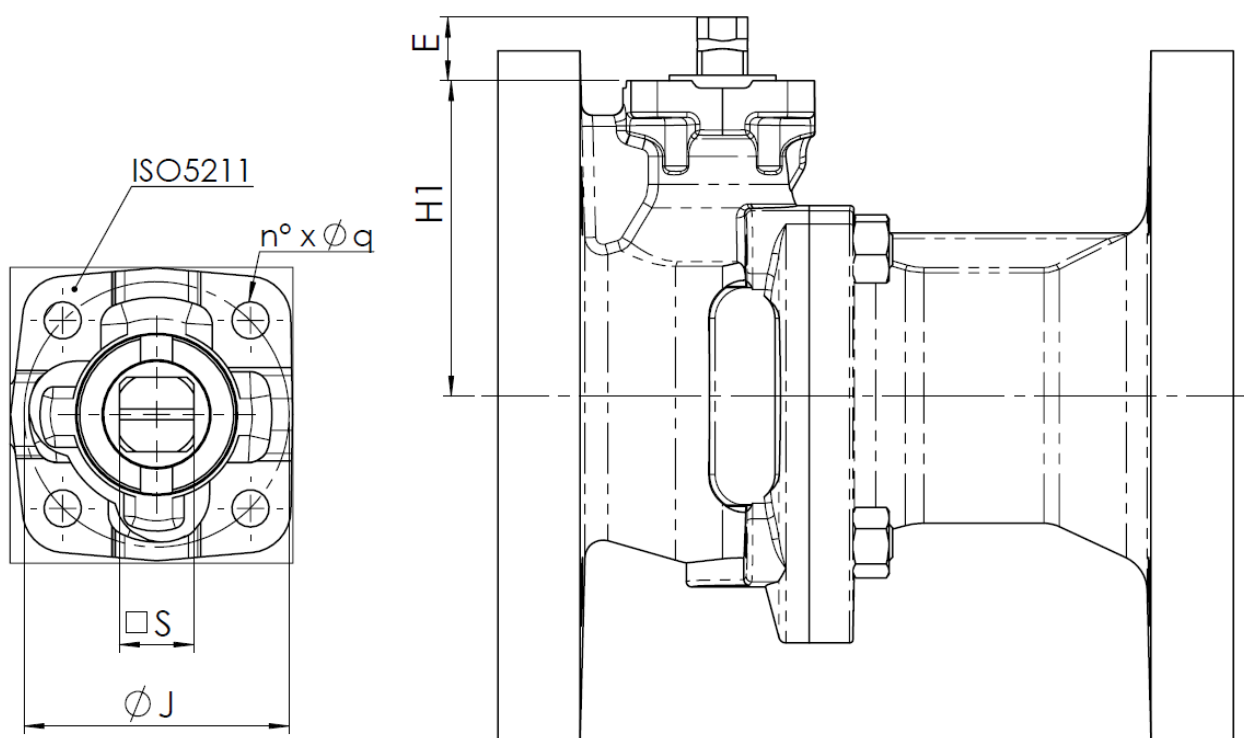
OPTIONAL FEATURES: 1) LOCKING DEVICE
 2) EXTENDED WRENCH
 3) MOUNTING PLATE DIN/ISO 5211
 4) GEAR MANUAL OPERATOR
 5) PNEUMATIC/ELECTRIC ACTUATOR

	DESCRIZIONE	DESCRIPTION	BZ	AL / BZ	AL / BZ MONEL
1	CORPO	BODY	ASTM B62 C83600	ASTM B148 C95800	ASTM B148 C95800
2	FLANGIA	FLANGE	ASTM B62 C83600	ASTM B148 C95800	ASTM B148 C95800
3	TIRANTE	BOLTING	ASTM A479-316 (A4)	ASTM A479-316 (A4)	ASTM A479-316 (A4)
4	GUARNIZIONE	BODY SEAL	VITON	VITON	VITON
5	SEGGIO	SEAT	P.T.F.E.	P.T.F.E.	P.T.F.E.
6	SFERA	BALL	ASTM B148 C95800	ASTM B148 C95800	MONEL
7	ASTA	STEM	ASTM B150 C63000	ASTM B150 C63000	MONEL
8	SEDE ASTA	STEM SEAT	VITON	VITON	VITON
9	PREMISTOPPA	THRUST WASHER	ASTM B148 C95800	ASTM B148 C95800	ASTM B148 C95800
10	PIASTRINA FERMO	STOP PLATE	ASTM A182 F316	ASTM A182 F316	ASTM A182 F316
11	BULLONE	BOLT	ASTM A479-316 (A4)	ASTM A479-316 (A4)	ASTM A479-316 (A4)
12	LEVA	LEVER	ASTM A105 Epoxy	ASTM A182 F316	ASTM A182 F316

FLANGED ENDS: ANSI B16.5 (ANSI B16.24 THICKNESS) 150 FF/RF

SIZE	2"	3"	4"	6"	8"	10"
DN	50	80	100	150	198	250
φ	40	50	80	100	146	200
L	178	203	229	267	293	330
M	230	230	280	365	560	1000
H	125	134	164	180	332	320
Kg	8.5	14.0	23	33	72	146

ISO TOP WORK



Dimensioni attacco ISO / Topwork dimension (mm)				
DN	50	80	100	150
H1	78.5	87	118	132.5
E	17.5	17.5	20	20
ISO 5211	F05	F05	F07	F07
S	14	14	17	17
J	50	50	70	70
n x q	4 X 7	4 X 7	4 X 9	4 X 9
Momento torcente / Operating torque DP= 16 bar				
Nm	18	20	70	100

Per la corretta scelta del servo comando si consiglia di moltiplicare il momento torcente per il fattore di sicurezza **K= 1,5**

For the choice of the right actuator we recommend to multiply the operating torque by the safety factor **K=1,5**

Dimensioni in mm / Dimension in mm