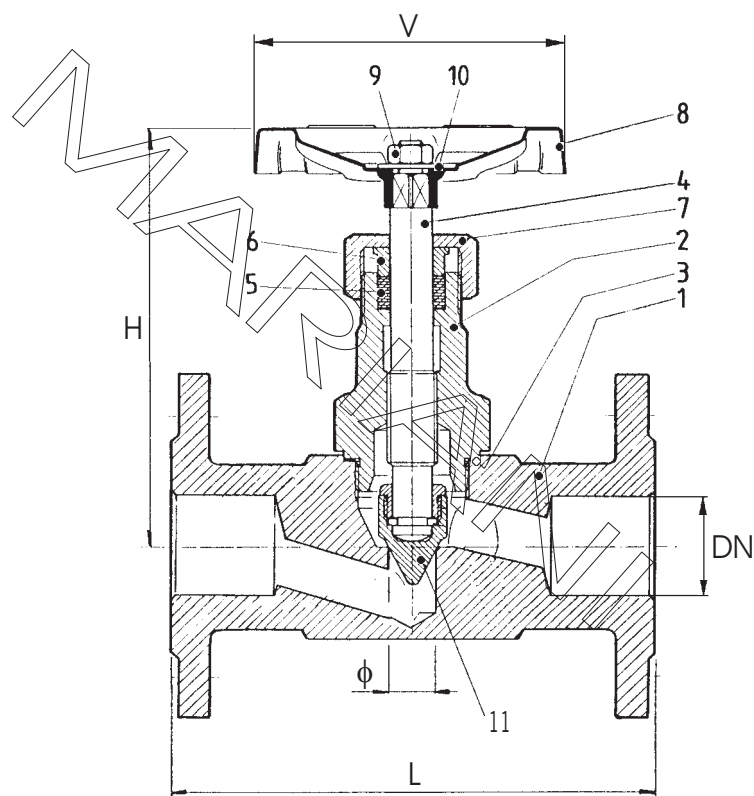


**VALVOLA A SPILLO - VD - FLANGE SALDATE - ACCIAIO C./INOX - DIN/ANSI**  
**NEEDLE VALVE - STRAIGHT WAY - SOLDER FLANGES -**  
**CARBON/STAINLESS ST. - DIN/ANSI**



**WORKING PRESSURES**  
W.O.G. NON SHOCK  
**1440 p.s.i.**

**OPTIONAL MATERIALS:** 10)ASTM A350 LF2  
11)MONEL K500  
12)ASTM A494 CW12M1 (HASTELLOY C)  
13)UNS-S 31803 (DUPLEX STAINLESS)

**OPTIONAL FEATURES:** 1)RIGHT ANGLE CONSTRUCTION  
2)LENGHT ANSI B16.10

	DESCRIZIONE	DESCRIPTION	A (Carbon Steel)	INOX (Stainless Steel)
1	CORPO	BODY	ASTM A105	ASTM A182 F316
2	VITONE	BONNET	ASTM A105	ASTM A182 F316
3	GUARNIZIONE	GASKET	GRAPHITE TEFLONED	GRAPHITE TEFLONED
4	ASTA	STEM	ASTM A182 F6	ASTM A182 F316
5	BADERNA	STEM PACKING	GRAPHITE TEFLONED	GRAPHITE TEFLONED
6	PREMISTOPPA	PACKING GLAND	ASTM A105	ASTM A182 F316
7	DADO PREMISTOPPA	GLAND NUT	ASTM A105	ASTM A105
8	VOLANTINO	HANDWHEEL	LAQUERED STEEL	LAQUERED STEEL
9	DADO - VOLANTINO	HANDWHEEL NUT	ZINC PLATED STEEL	ZINC PLATED STEEL
10	RONDELLA	WASHER	ASTM A105	ASTM A105
11	OTTURATORE	NEEDLE	ASTM A182 F6	ASTM A182 F316

**FLANGED ENDS: ANSI-ASME B16.5 150-300-600 RF**  
**DIN 2501 PN 10-16-25-40**

SIZE	1/4"	3/8"	1/2"	3/4"	1"	1 1/4"	1 1/2"	2"	2 1/2"	3"
DN	8	10	15	20	25	32	40	50	65	80
φ	5	6	8	9	11	13	18	20	20	20
L	110	110	110	120	130	140	165	190	210	210
H	100	100	100	115	145	150	160	170	170	170
V	70	70	70	80	90	100	125	150	150	180
Kg	2.150	2.150	2.350	3.200	4.600	6.500	7.500	9.600	10.500	12